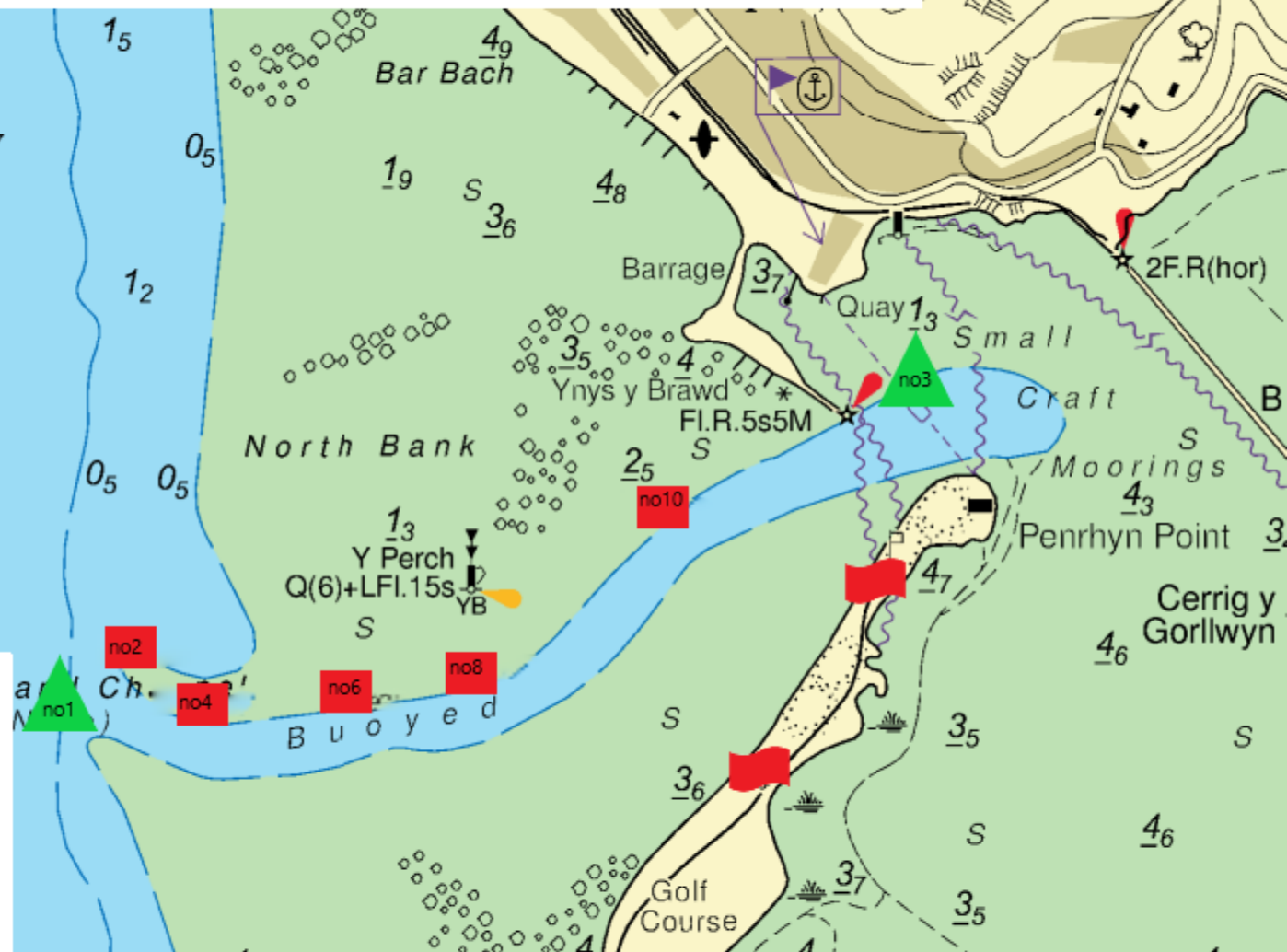
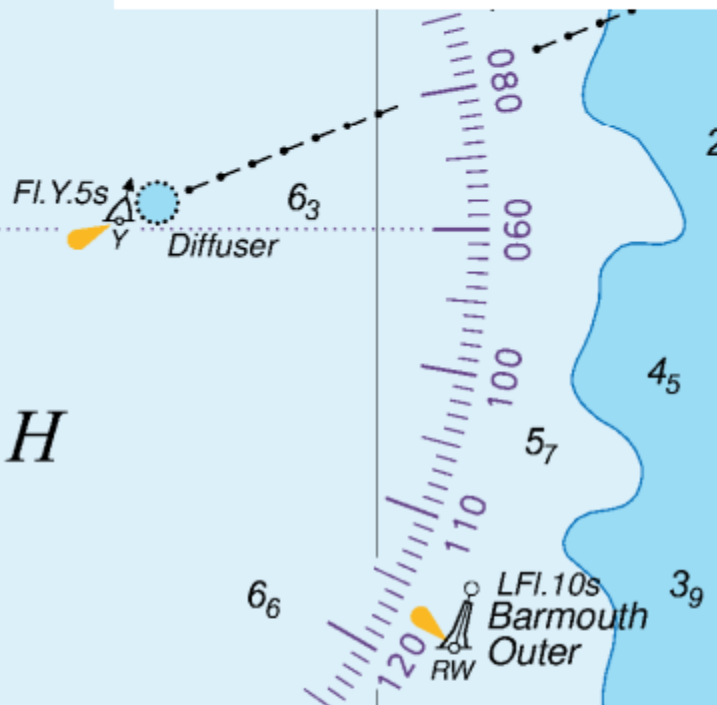


# Harbwr Abermaw/Barmouth Harbour

## Hydref/October 2024

66  
82  
7  
O U T H  
82  
66



FAIRWAY BUOY	52°42.796N	004°04.906W	LFI.10sec
No1 STARBOARD BUOY	52°42.897N	004°04.382W	Qk Fl G
No2 PORTHAND BUOY	52°42.866N	004°04.355W	Fl R 2sec
No4 PORTHAND BUOY	52°42.690N	004°04.165W	2L Fl R 7sec
No6 PORTHAND BUOY	52°42.857N	004°04.331W	Qk Fl R
No8 PORTHAND BUOY	52°42.767N	004°03.760W	Fl (3) R 10sec
SOUTH CARDINAL PERCH	52°42.822N	004°03.720W	Q(6) + Lf(1) 15sec
No10 PORTHAND BUOY	52°42.908N	004°03.308W	L Fl R (4) 15sec
BREAKWATER PORTHAND	52°42.989N	004°03.127W	Fl R (5) 5sec
No3 STARBOARD BUOY	52°43.013N	004°03.082W	Fl G 1.5sec

This illustration is intended as a guide only and not to be used for navigation. All positions are given as approximate. The Aids to Navigation may be moved without prior notice. Mariners are advised to contact the Harbour Masters Office for the latest navigational information.

Tel: 01341 280 671 / 07795012747

Email: [danielarthurcartwright@gwynedd.llyw.cymru](mailto:danielarthurcartwright@gwynedd.llyw.cymru)